
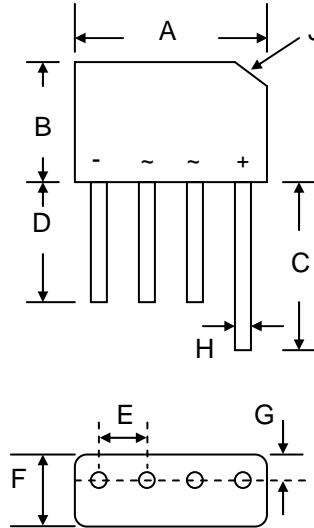


### Features

- Glass Passivated Die Construction
- Low Forward Voltage Drop
- High Current Capability
- High Reliability
- High Surge Current Capability
- Ideal for Printed Circuit Boards
-  Recognized File # E157705

### Mechanical Data

- Case: KBPM, Molded Plastic
- Terminals: Plated Leads Solderable per MIL-STD-202, Method 208
- Polarity: As Marked on Body
- Weight: 1.7 grams (approx.)
- Mounting Position: Any
- Marking: Type Number
- **Lead Free: For RoHS / Lead Free Version, Add “-LF” Suffix to Part Number, See Page 4**



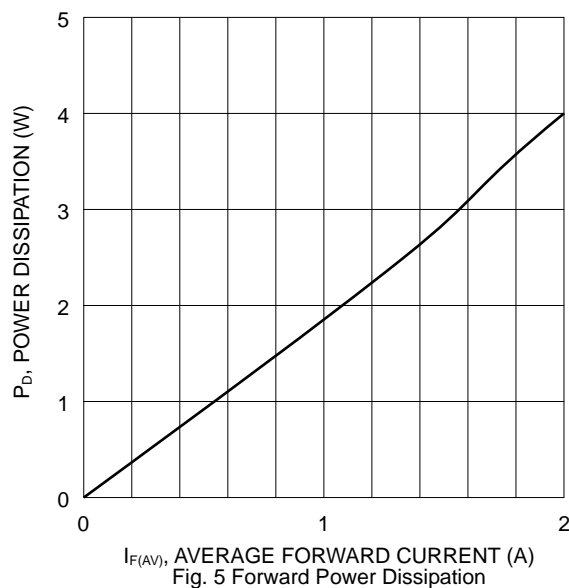
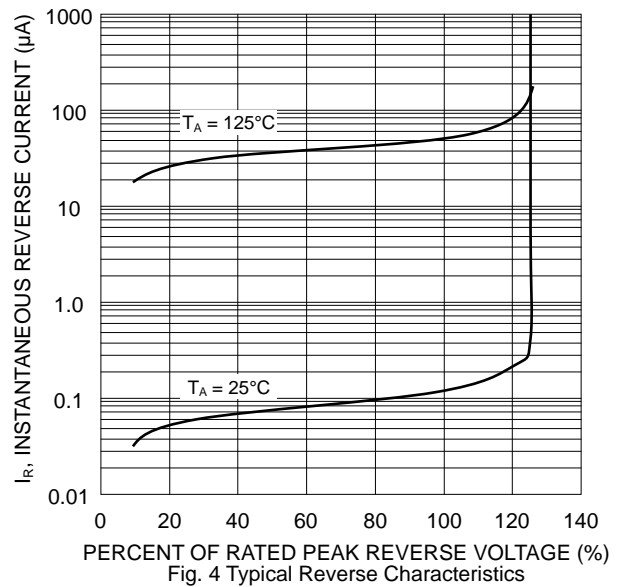
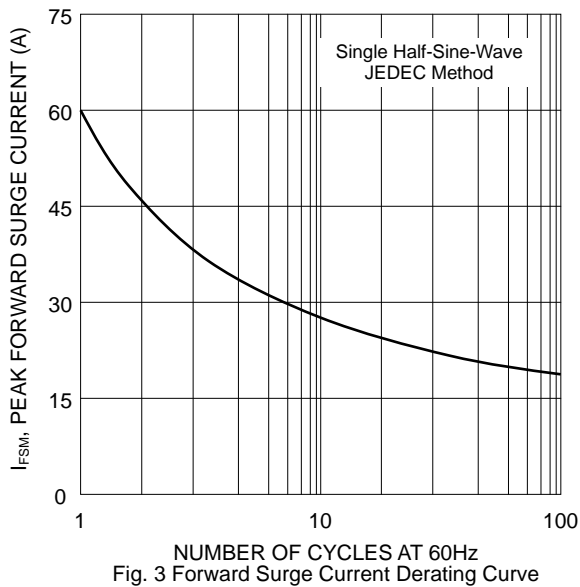
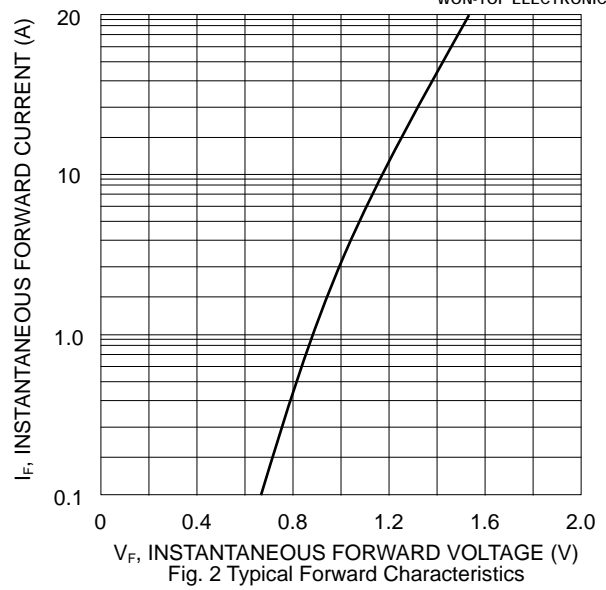
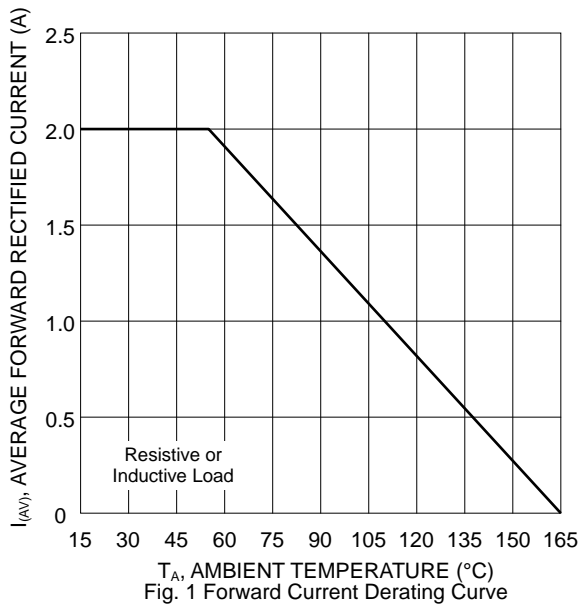
| KBPM                 |                   |       |
|----------------------|-------------------|-------|
| Dim                  | Min               | Max   |
| A                    | 14.22             | 15.24 |
| B                    | 10.60             | 11.68 |
| C                    | 15.20             | —     |
| D                    | 12.70             | —     |
| E                    | 3.60              | 4.10  |
| F                    | 3.70              | 3.90  |
| G                    | 1.27 Typical      |       |
| H                    | 0.70              | 0.90  |
| J                    | 3.2 x 45° Typical |       |
| All Dimensions in mm |                   |       |

### Maximum Ratings and Electrical Characteristics @T<sub>A</sub>=25°C unless otherwise specified

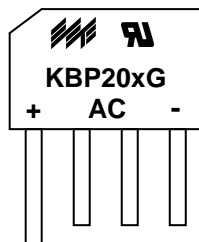
Single Phase, half wave, 60Hz, resistive or inductive load. For capacitive load, derate current by 20%.

| Characteristic   | Symbol   | KBP 200G    | KBP 201G | KBP 202G | KBP 204G | KBP 206G | KBP 208G | KBP 2010G | Unit             |
|--|--|-------------|----------|----------|----------|----------|----------|-----------|------------------|
| Peak Repetitive Reverse Voltage<br>Working Peak Reverse Voltage<br>DC Blocking Voltage                             | V <sub>RRM</sub><br>V <sub>RWM</sub><br>V <sub>R</sub> | 50          | 100      | 200      | 400      | 600      | 800      | 1000      | V                |
| RMS Reverse Voltage  | V <sub>R(RMS)</sub>                                    | 35          | 70       | 140      | 280      | 420      | 560      | 700       | V                |
| Average Rectified Output Current @T <sub>A</sub> = 55°C  | I <sub>O</sub>   | 2.0         |          |          |          |          |          |           | A                |
| Non-Repetitive Peak Forward Surge Current<br>8.3ms Single half sine-wave superimposed on rated load (JEDEC Method) | I <sub>FSM</sub>                                       | 60          |          |          |          |          |          |           | A                |
| Forward Voltage per leg @I <sub>F</sub> = 2.0A   | V <sub>F</sub>   | 1.1         |          |          |          |          |          |           | V                |
| Peak Reverse Current @T <sub>A</sub> = 25°C<br>At Rated DC Blocking Voltage @T <sub>A</sub> = 125°C                | I <sub>R</sub>   | 5.0<br>500  |          |          |          |          |          |           | μA               |
| I <sup>2</sup> t Rating for Fusing (t < 8.3ms)   | I <sup>2</sup> t                                       | 15          |          |          |          |          |          |           | A <sup>2</sup> s |
| Typical Junction Capacitance (Note 1)  | C <sub>j</sub>   | 25          |          |          |          |          |          |           | pF               |
| Thermal Resistance Junction to Ambient (Note 2)<br>Thermal Resistance Junction to Lead (Note 2)                    | R <sub>JA</sub><br>R <sub>JL</sub>                     | 30<br>11    |          |          |          |          |          |           | °C/W             |
| Operating and Storage Temperature Range  | T <sub>j</sub> , T <sub>STG</sub>                      | -55 to +165 |          |          |          |          |          |           | °C               |

Note: 1. Measured at 1.0 MHz and applied reverse voltage of 4.0V D.C.  
2. Mounted on PCB with 12mm x 12mm copper pads.



## MARKING INFORMATION



KBP20xG = Device Number  
 x = 0, 1, 2, 4, 6, 8 or 10  
 Polarity = As Marked on Body

## PACKAGING INFORMATION

### BULK

| Tube Size<br>L x W x H (mm) | Quantity<br>(PCS) | Inner Box Size<br>L x W x H (mm) | Quantity<br>(PCS) | Carton Size<br>L x W x H (mm) | Quantity<br>(PCS) | Approx. Gross Weight<br>(KG) |
|-----------------------------|-------------------|----------------------------------|-------------------|-------------------------------|-------------------|------------------------------|
| 393 x 35 x 6                | 25                | 400 x 140 x 76                   | 1,000             | 415 x 300 x 185               | 4,000             | 12.0                         |

**Note:** 1. Anti-static tube, water clear color.

## ORDERING INFORMATION

| Product No. | Package Type | Shipping Quantity |
|-------------|--------------|-------------------|
| KBP200G     | SIL Bridge   | 25 Units/Tube     |
| KBP201G     | SIL Bridge   | 25 Units/Tube     |
| KBP202G     | SIL Bridge   | 25 Units/Tube     |
| KBP204G     | SIL Bridge   | 25 Units/Tube     |
| KBP206G     | SIL Bridge   | 25 Units/Tube     |
| KBP208G     | SIL Bridge   | 25 Units/Tube     |
| KBP2010G    | SIL Bridge   | 25 Units/Tube     |

1. Shipping quantity given is for minimum packing quantity only. For minimum order quantity, please consult the Sales Department.
2. **To order RoHS / Lead Free version (with Lead Free finish), add "-LF" suffix to part number above. For example, KBP200G-LF.**

WON-TOP ELECTRONICS and  are registered trademarks of Won-Top Electronics Co., Ltd (WTE). WTE has checked all information carefully and believes it to be correct and accurate. However, WTE cannot assume any responsibility for inaccuracies. Furthermore, this information does not give the purchaser of semiconductor devices any license under patent rights to manufacturer. WTE reserves the right to change any or all information herein without further notice.

**WARNING:** DO NOT USE IN LIFE SUPPORT EQUIPMENT. WTE power semiconductor products are not authorized for use as critical components in life support devices or systems without the express written approval.

**Won-Top Electronics Co., Ltd.**  
No. 44 Yu Kang North 3rd Road,  
Chine Chen Dist., Kaohsiung 806, Taiwan  
**Phone:** 886-7-822-5408 or 886-7-822-5410  
**Fax:** 886-7-822-5417  
**Email:** sales@wontop.com  
**Internet:** http://www.wontop.com

*We power your everyday.*