

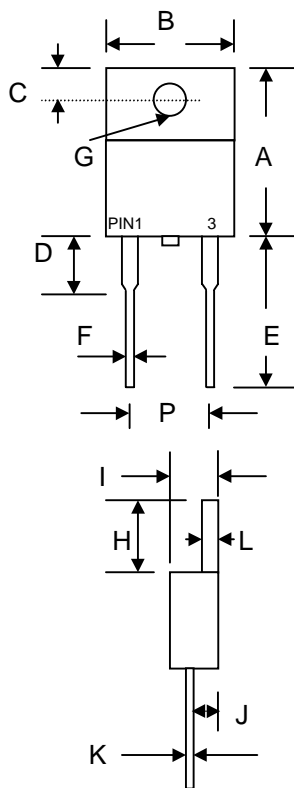
8.0A GLASS PASSIVATED SUPERFAST RECTIFIER

Features

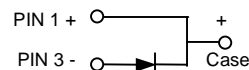
- Glass Passivated Die Construction
- Super-Fast Switching
- Low Forward Voltage Drop
- Low Reverse Leakage Current
- High Surge Current Capability
- Plastic Material has UL Flammability Classification 94V-O

Mechanical Data

- Case: TO-220A, Molded Plastic
- Terminals: Plated Leads Solderable per MIL-STD-202, Method 208
- Polarity: See Diagram
- Weight: 2.24 grams (approx.)
- Mounting Position: Any
- Mounting Torque: 11.5 cm·kg (10 in·lbs) Max.
- **Lead Free: For RoHS / Lead Free Version, Add “-LF” Suffix to Part Number, See Page 4**



TO-220A		
Dim	Min	Max
A	13.90	15.90
B	9.80	10.70
C	2.54	3.43
D	3.56	4.56
E	12.70	14.73
F	0.51	0.96
G	3.55 Ø	4.09 Ø
H	5.75	6.85
I	4.16	5.00
J	2.03	2.92
K	0.30	0.65
L	1.14	1.40
P	4.83	5.33
All Dimensions in mm		



Maximum Ratings and Electrical Characteristics @T_A=25°C unless otherwise specified

Single Phase, half wave, 60Hz, resistive or inductive load.

For capacitive load, derate current by 20%.

Characteristic	Symbol	ER 800	ER 801	ER 801A	ER 802	ER 803	ER 804	ER 806	Unit
Peak Repetitive Reverse Voltage Working Peak Reverse Voltage DC Blocking Voltage	VRRM VRWM VR	50	100	150	200	300	400	600	V
RMS Reverse Voltage	VR(RMS)	35	70	105	140	210	280	420	V
Average Rectified Output Current @TC = 105°C	IO	8.0							A
Non-Repetitive Peak Forward Surge Current 8.3ms Single half sine-wave superimposed on rated load (JEDEC Method)	IFSM	125							A
Forward Voltage @IF = 8.0A	VFM	0.95				1.3		1.7	V
Peak Reverse Current @TA = 25°C At Rated DC Blocking Voltage @TA = 100°C	IRM	10 400							µA
Reverse Recovery Time (Note 1)	trr	35				50			nS
Typical Junction Capacitance (Note 2)	Cj	80				50			pF
Operating and Storage Temperature Range	Tj, TSTG	-65 to +150							°C

Note: 1. Measured with I_F = 0.5A, I_R = 1.0A, I_{RR} = 0.25A.

2. Measured at 1.0 MHz and applied reverse voltage of 4.0V D.C.

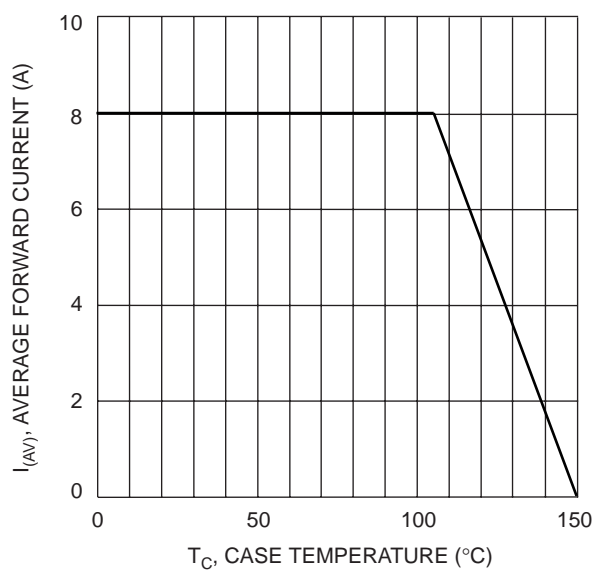


Fig. 1 Forward Current Derating Curve

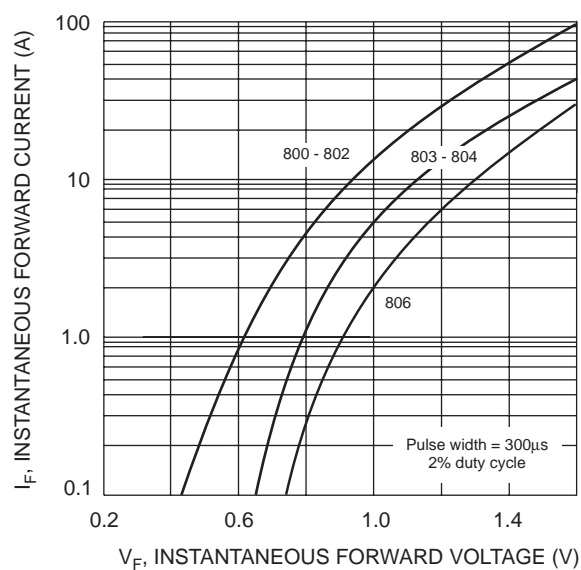


Fig. 2 Typical Forward Characteristics

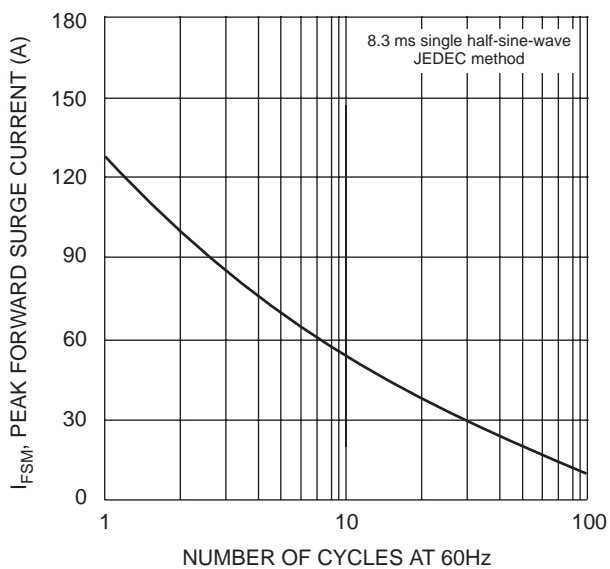


Fig. 3 Max Non-Repetitive Surge Current

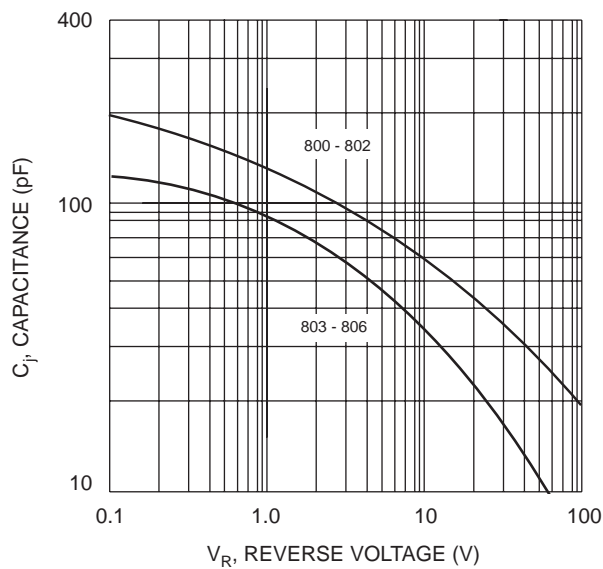
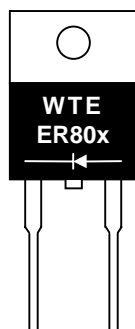


Fig. 4 Typical Junction Capacitance

MARKING INFORMATION



WTE = Manufacturer's Logo
 ER80x = Device Number
 x = 0, 1, 1A, 2, 3, 4 or 6
 Polarity = As Marked on Body

PACKAGING INFORMATION

BULK

Tube Size L x W x H (mm)	Quantity (PCS)	Inner Box Size L x W x H (mm)	Quantity (PCS)	Carton Size L x W x H (mm)	Quantity (PCS)	Approx. Gross Weight (KG)
525 x 31 x 6	50	555 x 145 x 95	2,000	572 x 306 x 218	8,000	19.0

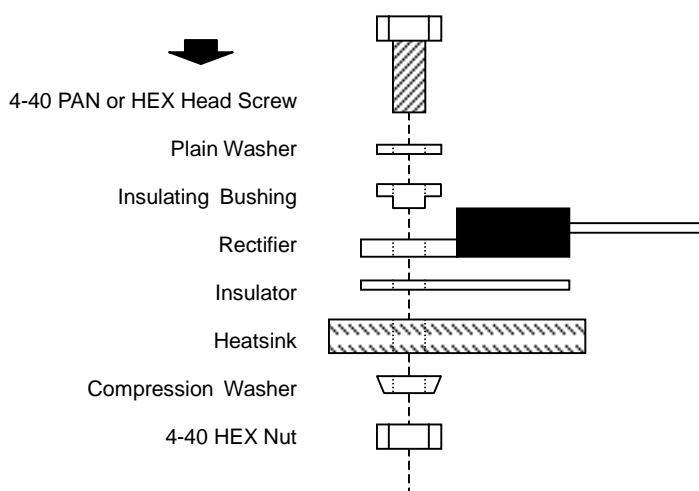
Note: 1. Anti-static tube, water clear color.

RECOMMENDED SCREW MOUNTING ARRANGEMENT

Recommended isolated mounting when screw is at heatsink potential. 4-40 hardware is used.

Screw should not be tightened with any type of air-forced torque or equipment that may cause high impact on device package. The insulating bushing inside the mounting hole will insure the screw threads do not contact the metal base.

The interface should apply a layer of thermal grease or a highly conductive thermal pad for better heat dissipation.



ORDERING INFORMATION

Product No.	Package Type	Shipping Quantity
ER800	TO-220A	50 Units/Tube
ER801	TO-220A	50 Units/Tube
ER801A	TO-220A	50 Units/Tube
ER802	TO-220A	50 Units/Tube
ER803	TO-220A	50 Units/Tube
ER804	TO-220A	50 Units/Tube
ER806	TO-220A	50 Units/Tube

1. Shipping quantity given is for minimum packing quantity only. For minimum order quantity, please consult the Sales Department.
2. **To order RoHS / Lead Free version (with Lead Free finish), add "-LF" suffix to part number above. For example, ER800-LF.**

Won-Top Electronics Co., Ltd (WTE) has checked all information carefully and believes it to be correct and accurate. However, WTE cannot assume any responsibility for inaccuracies. Furthermore, this information does not give the purchaser of semiconductor devices any license under patent rights to manufacturer. WTE reserves the right to change any or all information herein without further notice.

WARNING: DO NOT USE IN LIFE SUPPORT EQUIPMENT. WTE power semiconductor products are not authorized for use as critical components in life support devices or systems without the express written approval.

Won-Top Electronics Co., Ltd.

No. 44 Yu Kang North 3rd Road, Chine Chen Dist., Kaohsiung, Taiwan

Phone: 886-7-822-5408 or 886-7-822-5410

Fax: 886-7-822-5417

Email: sales@wontop.com

Internet: <http://www.wontop.com>

We power your everyday.